

Site Layout & Setup and Training

Site Preparation

(Customer must have the following ready at time of installation)

- Plants work best if they are mounted to a concrete slab.
- Electric power must be ready at the site at time of installation
- Water must be ready at the site with line to hook to plant maximum psi 75

Electric Power

Important Note: You need 1 1/2 time the current draw for motor starting purposes

N-2200 Batch Plants

- 60 HP - 75 HP
- 480 Volts, 3 phase, 80 - 100 amps
- 120 Volts, single phase, 20 amps

Site Layout Drawing

Follow Carefully

Set-up & Training

Set-up and training is included in the price of the plant. Customer must pay airfare and provide decent hotel and transportation while set-up and training is in process. Customer will provide all items listed in the Installation Agreement (attached). Customer pays electrician, scale calibration & hook-up, two men and equipment for assembly as needed.

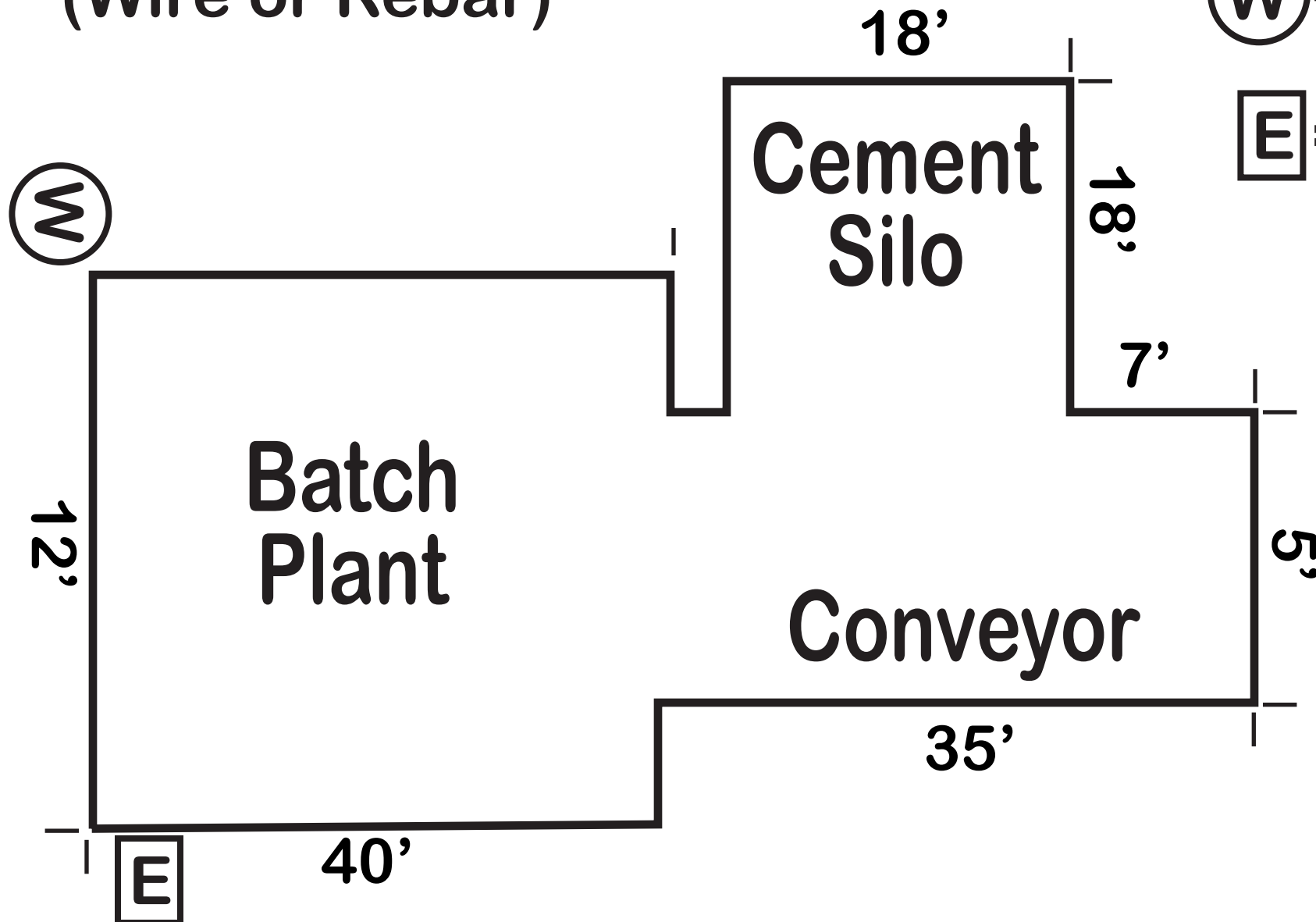
N-2200 Portable Batch Plant & Silo

Concrete Pad 6" 3,000 PSI

(Wire or Rebar)

Ⓜ = Water

ⓔ = Electric



Volts = 480